

# CREAVALO



Reed Wallcovering

## REED

By Juan Guijarro

CREA  
VALO



## REED

By Juan Guijarro

CREA  
VALO

### DISCOVER REED Descubre Reed

We present REED, the new architectural wall covering collection designed by Juan Guijarro for Creavalo. Inspired by vertical striation as a timeless architectural resource, REED introduces a continuous relief that brings rhythm and depth to interior surfaces. Manufactured with **90% recycled material**, combining recovered textile waste and recycled cork, REED transforms discarded matter into refined architectural surfaces.

Presentamos REED, la nueva colección de revestimiento arquitectónico diseñada por Juan Guijarro para Creavalo. Inspirada en la estriación vertical como recurso arquitectónico atemporal, REED introduce un relieve continuo que aporta ritmo y profundidad a las superficies interiores. Fabricada con un 90% de material reciclado, a partir de residuo textil recuperado y corcho reciclado, REED transforma materia descartada en superficies arquitectónicas refinadas.



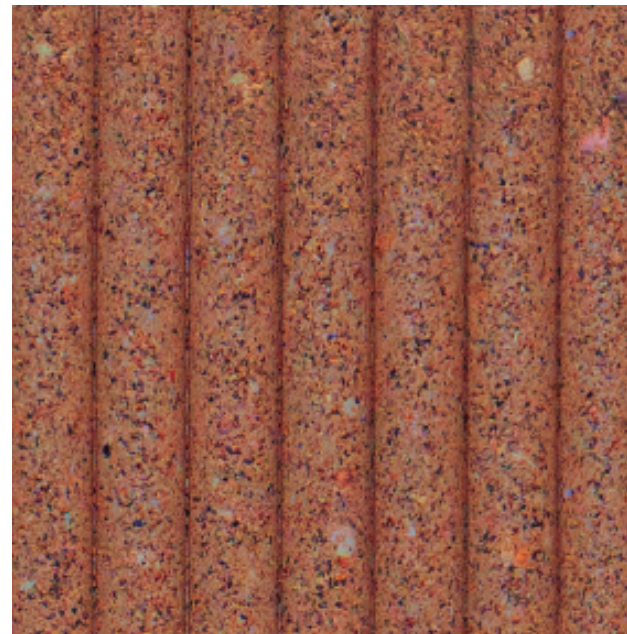
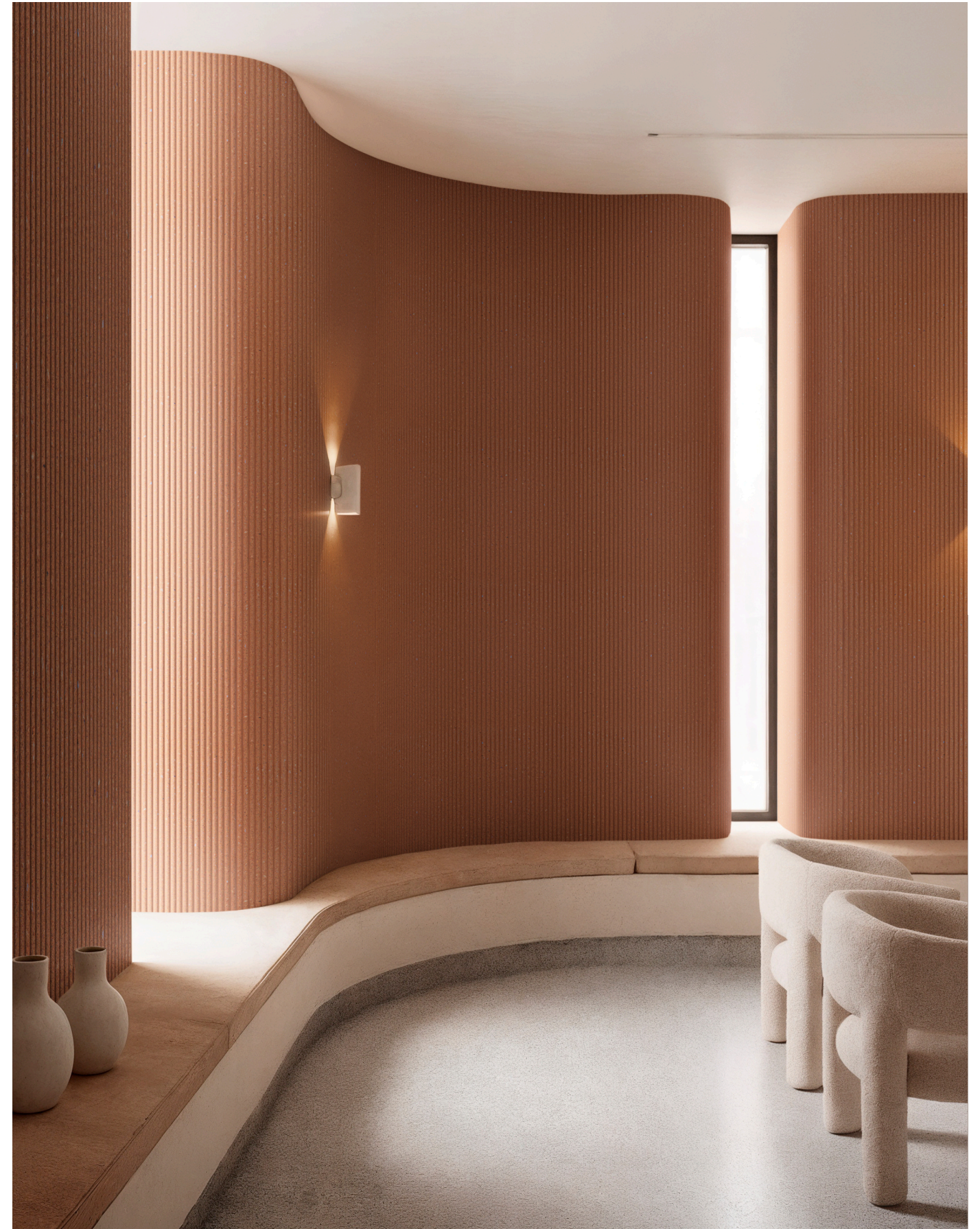
**REED**  
By Juan Guijarro

CREA  
VALO



**REED**  
By Juan Guijarro

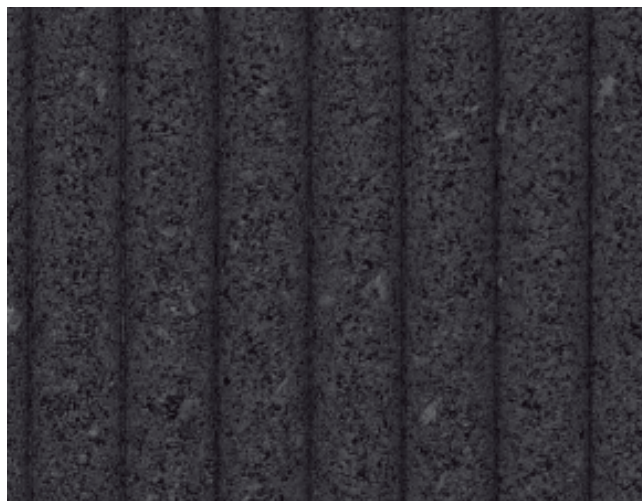
CREA  
VALO



## REED

By Juan Guijarro

CREA  
VALO



## REED

By Juan Guijarro

CREA  
VALO

### REED MICRO

REED Micro is the first design within the REED collection. Its fine vertical striation creates a precise and continuous relief with a subtle architectural expression. Thanks to its flexibility and a minimum bending radius of 5 cm, REED Micro adapts easily to curved surfaces and singular elements. While perfectly suited for flat walls, its flexibility also allows seamless integration into curved walls, columns, furniture and custom design elements.

REED Micro es el primer diseño de la colección REED. Su estriación vertical de escala fina genera un relieve preciso y continuo con una lectura arquitectónica sutil. Gracias a su flexibilidad y a un radio mínimo de curvatura de 5 cm, REED Micro se adapta fácilmente a superficies curvas y elementos singulares. Aunque funciona perfectamente en paredes planas, su flexibilidad permite también una integración natural en muros curvos, columnas, mobiliario y elementos de diseño a medida.



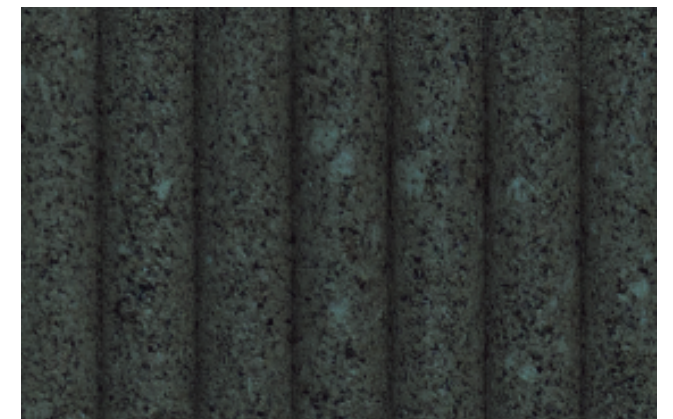
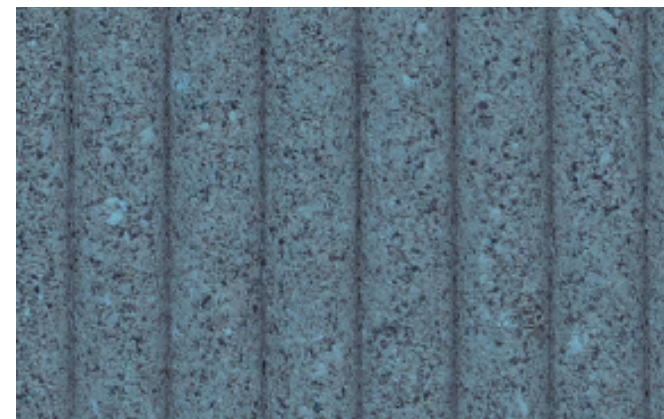
**REED**  
By Juan Guijarro

CREA  
VALO



**REED**  
By Juan Guijarro

CREA  
VALO

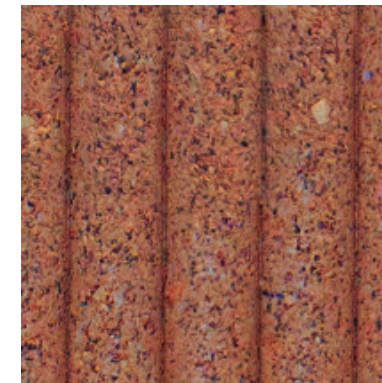




**COLOURS** Colores



Golden Sand



Oxide Clay



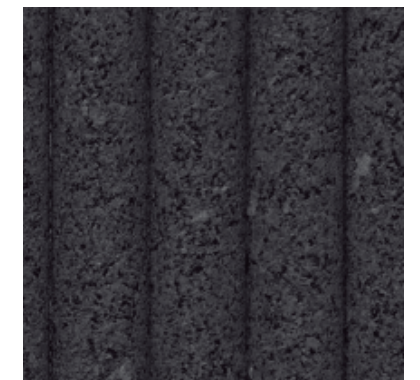
Rustic Clay



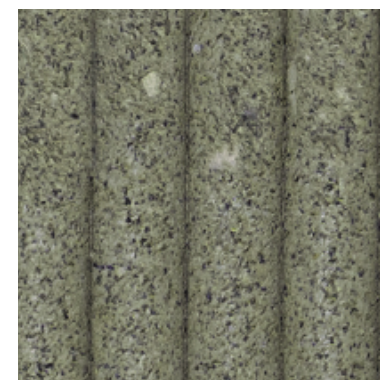
Brown Bark



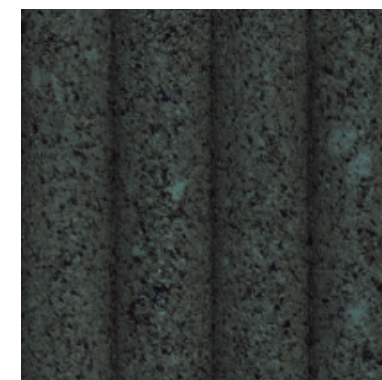
Urban Stone



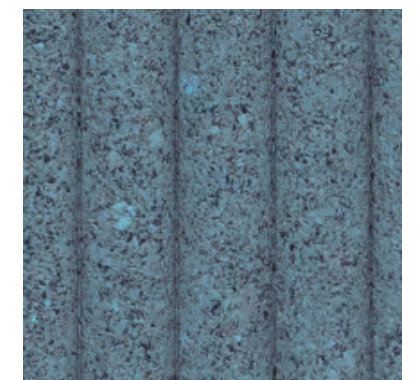
Volcanic Ash



Olive Stone



Deep Moss



Mineral Blue

**Colour customisation available.** Personalización cromática disponible.

**REED**

By Juan Guijarro

CREA  
VALO

### Technical Data Sheet Ficha técnica

#### Panel dimensions

Dimensiones de la plancha 40 x 80 x 0,9 cm

#### Minimum bending radius

Radio mínimo de curvatura 5 cm

#### Fire reaction classification

Clasificación de reacción al fuego B - s2, d0

#### Acoustic absorption (with cavity)

Absorción acústica (con cámara) a = 0,60

#### Volatile Organic Compounds (VOC)

Emisiones volátiles A+

#### Cleaning recommendations

Recomendaciones de limpieza

**For regular cleaning, use a soft, dry cloth or sponge. For stains, rinse with clean water and dry with an absorbent cloth. For deeper textures, use a vacuum cleaner with a clean brush attachment.**

Para limpieza regular, usar un paño o esponja secos y suaves. Para manchas, enjuagar con agua limpia y secar con un paño absorbente. Para las texturas profundas, usar una aspiradora con cepillo limpio.

**REED**

By Juan Guijarro


CREA  
VALO



TEXTILE WASTE  
TURNED INTO  
WALLCOVERING.

RESIDUO  
TEXTIL  
CONVERTIDO EN  
REVESTIMIENTO.

R | E | E | D

 @wearecreavalo

 contacto@creavalo.com

