

CREA
VALO

MANHATTAN

BY JUAN GUIJARRO



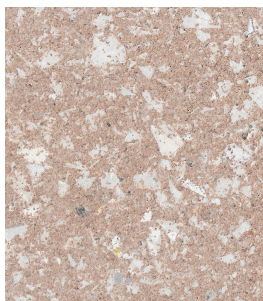
DISCOVER THE MANHATTAN COLLECTION

The Manhattan collection features 40 × 80 cm panels, handcrafted in Spain from discarded textiles and recycled cork. Materials once intended for incineration or landfill are transformed into crafted and durable surfaces with a story to tell.

Inspired by Manhattan's urban grid, the modular design enables flexible compositions in different sizes and colors, adapting seamlessly to any wall or ceiling.

Beyond design, Manhattan invites spaces to take part in the **fight against textile waste**, proving that what was once discarded can become part of something lasting and meaningful.

COLORS *



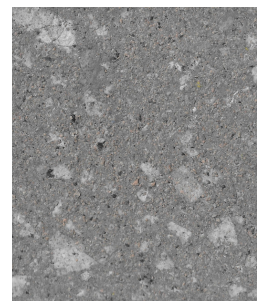
Golden Sand
C242A



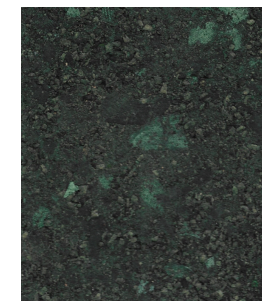
Rustic Clay
C273B



Brown Bark
C283



Urban Stone
C260



Deep Moss
C282D



IMPACT AND MATERIAL VALUE

Each square meter of Manhattan gives a second life to around **7.6 kg of recovered waste**, consisting of 3.8 kg of recycled textiles and 3.8 kg of recycled cork. That is an equivalent of 8 bed sheets and 633 wine corks transformed into a new surface material.

Both materials come from post-industrial and post-consumer sources, processed and bonded to create panels with durable, acoustic and aesthetic properties.

By choosing Manhattan, each project helps reduce textile waste and promotes a more circular approach to design.



CUTTING OPTIONS

The image displays a full 40 × 80 cm panel from the Manhattan collection. Below, different cutting examples show how each piece can be adapted to the needs of any project.

Panels can be cut directly along the joints to obtain smaller formats, allowing precise adjustments and easy installation on site with simple tools such as a utility knife.

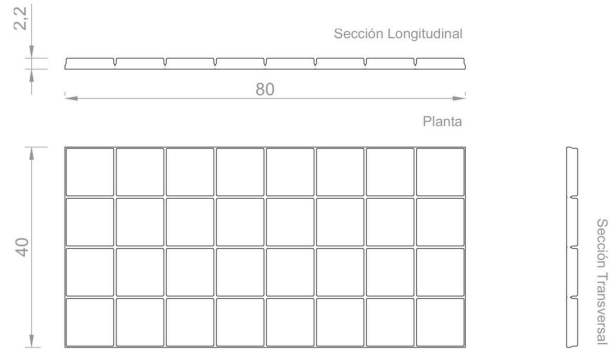


DESIGN FLEXIBILITY

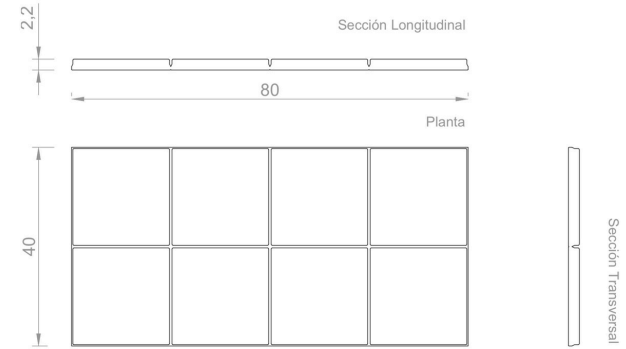
Manhattan is conceived as a modular system that adapts to any surface. The 40 × 80 cm panels are available in three grid designs: 10 × 10 cm squares, 20 × 20 cm squares, and 10 × 20 cm rectangles. Different thicknesses and colors can be combined by cutting and swapping pieces, creating variations in rhythm, depth and tone.

This system gives architects and interior designers the freedom to build compositions that align with the identity and atmosphere of each space.

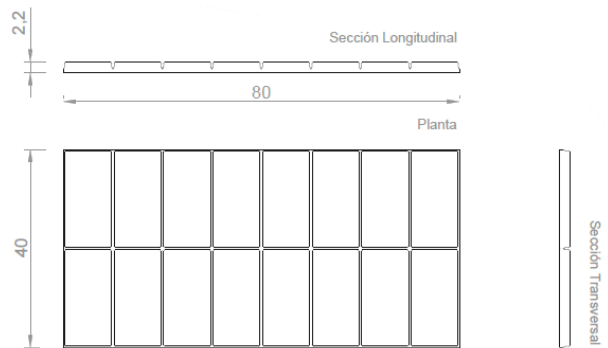
MANHATTAN 40x80 10x10cm Square



MANHATTAN 40x80 20x20cm Square



MANHATTAN 40x80 10x20cm Rectangle



TECHNICAL SHEET – MANHATTAN PANEL

Composition 45 % Textile waste, 45% cork residue, and 10% binder.

Dimensions 40 x 80 cm

**Sound Absorption Coefficient
(80mm cavity)** ISO: $\alpha_w = 0,60$;
ASTM: NRC = **0,65**

Absorption Coefficient at 125 Hz ISO: $\alpha_s = 1,41$
Absorption Coefficient at 250 Hz ISO: $\alpha_s = 0,90$

Fire Reaction Rating B - S2, d0

Thermal Resistance 0,147 m²·K/W
Thermal Conductivity 0,068 W/m·K

**Volatile Organic Compound
(VOC) Emissions** A+ Rating

**Cleaning
Recommendations** For routine cleaning, use a soft, dry cloth or sponge.
For stains, rinse with clean water and dry with an
absorbent cloth.
For textured surfaces, a vacuum cleaner with a clean
brush attachment is recommended.

